

>> S7 Soft-PLC Server Edition

Did you think about to use your existing PC infrastructure for simulation or training of Siemens S7 hardware PLCs?



W32416



W32416-945



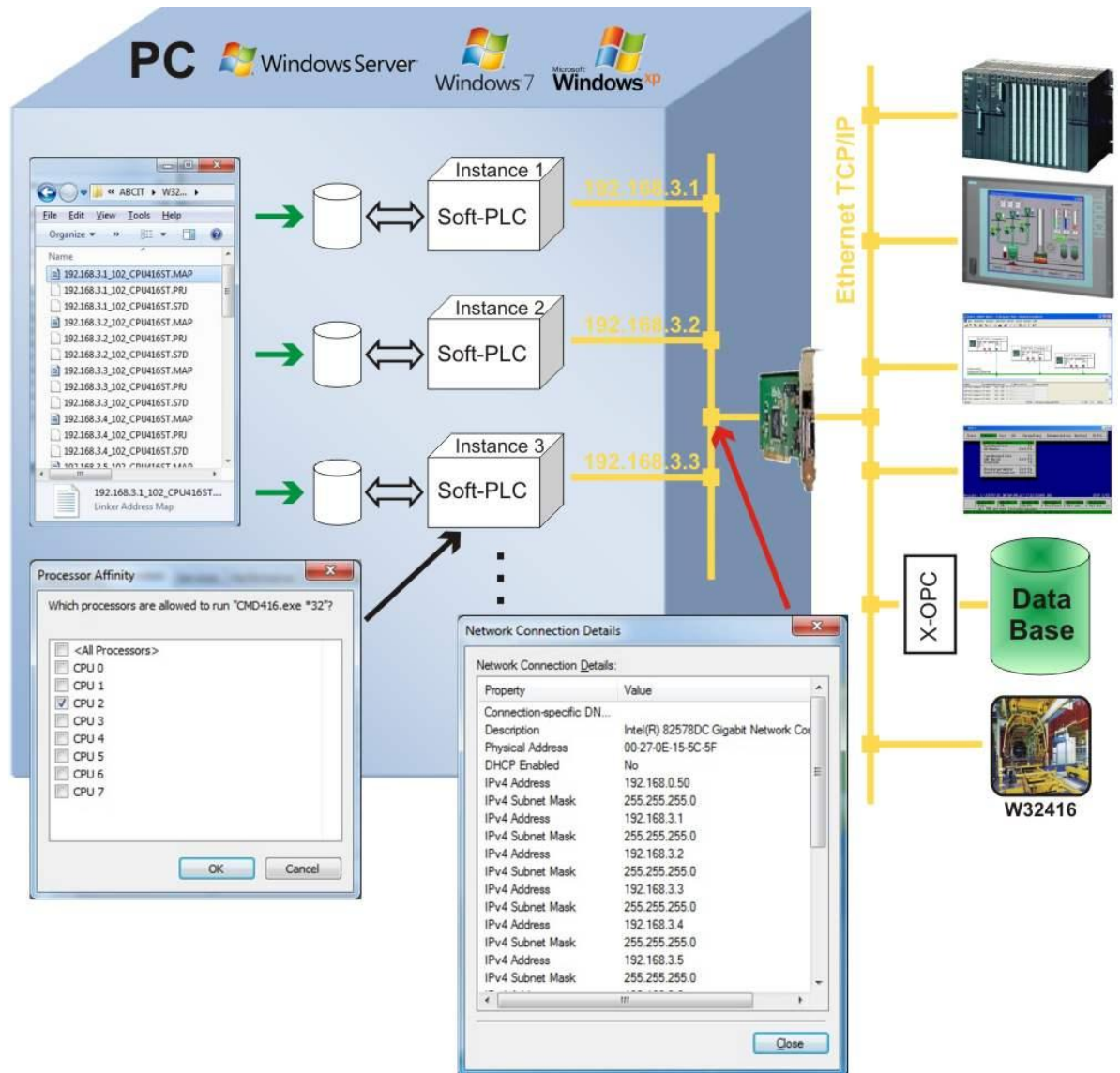
W32416-948



W32945



W32948



Features of the S7 Soft-PLC Server Edition

- Multiple Soft-PLCs running on one operating system
- Programming by Step®7 via Ethernet-TCP/IP interface
- Build-up of homogeneous and heterogeneous systems possible
- Command compliant to S7 CPU 416, incl. SFCs, SFBs
- Hwconfig, NetPro and system blocks are supported
- Simatic® NET installation not necessary
- Two versions are available: stand-alone version, server version
- Perfect for simulation, training and as test tool